

MasterSeal® 912

Swelling gasket in paste form

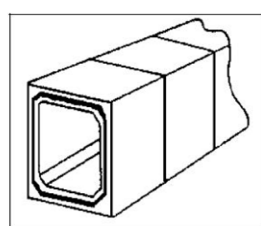
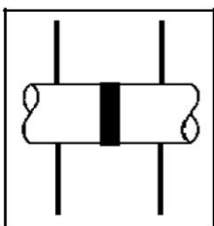
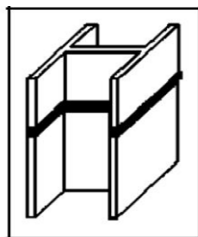
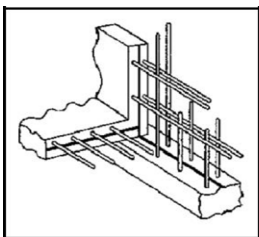
DESCRIPTION

MasterSeal 912 is a one component, moisture curing pre-polymer which is re-swellable when in contact with water, suitable for the permanent sealing of construction joints in concrete structures.

RECOMMENDED USES

MasterSeal 912 can be used in the following applications

- Construction joints of every kind (fig. 1).
- Connecting joints in sheet pilings (Fig. 2) or diaphragm walls.
- Wall penetration for metal, plastic and concrete pipes (Fig. 3), cable bushing.
- Bonding of **MasterSeal 910** swelling waterstops on very uneven or rough surfaces.
- Surrounding steel reinforcement bars on pile heads.



FEATURES AND BENEFITS

- **Supplied in paste form in cartridges** – simple to use
- **No performance change in high salt content water (sea water, brackish water)** – wide range of applications.
- **High swelling capacity in contact with water** – Helps making structures water tight.
- **Outstanding chemical resistance** – can be used in chemical storage tanks
- **Reversible swelling process** – Long term performance

PROPERTIES

On contact with water, the cured swelling gasket paste swells and seals the construction joint against water penetration.

An increase in volume of up to around 250% produced by storage of water in the paste's molecular structure.

Test Liquid	Stability	Swelling
Unleaded fuel	resistant / discoloring	~ 45%
Gasoline	resistant / discoloring	~ 2%
Toluene	resistant	~ 140%
Xylene	resistant	~ 85%
Methanol 50%	resistant	~ 400%
Isopropanol 50%	resistant	~ 500%
N-methylpyrrolidone	limited resistant	~ 615%
Ethylacetate	resistant	~ 195%
Methyl-Isobutylketone	resistant	~ 85%
Acetic acid 10%	limited resistant	~ 150%
Formol 36%	resistant	~ 500%
Sulphuric acid 10%	resistant	~ 190%
Sulphuric acid 20%	resistant	~ 210%
Sulphuric acid 26%	resistant	~ 25%

APPLICATION

Surface Preparation

Surfaces must be clean, sound and free of dust, oil, grease and other adhesion impairing contaminants. Carefully remove all loose particles and dust by appropriate measures.

Repair any concrete damages with a suitable MasterEmaco cementitious repair mortar and plug active leaks with **MasterSeal 590**.

Clear any standing water on the surface. The temperature of the substrate should be minimum +5° C and maximum +40°C.

MasterSeal[®] 912

Installation

MasterSeal 912 can be applied with a suitable hand-held caulking gun.

Puncture and lift the double layer bottom of the cartridge, remove the pellets. Puncture the opening of the cartridge and free entire cross section. Cut the nozzle diagonally to obtain an opening of 6-10mm and place the cartridge in the caulking gun. Direct the caulking gun along the surface at an angle of 45° extrude paste evenly and press the paste bead against the substrate.

For large jobs and ease of application we recommend pneumatic guns or mechanical guns with high gear

PACKAGING

MasterSeal 912 is supplied in carton boxes in 310ml cartridges:

Cartridge Volume	310ml
No. of Cartridges per Carton	6

ESTIMATION

Depending on substrate approx. 5m per 310 ml cartridge.

SHELF LIFE

MasterSeal 912 has a shelf life of 9 months. Store out of direct sunlight, clear of the ground on pallets protected from rainfall.

PRECAUTIONS

For the full health and safety hazard information and how to safely handle and use this product, please make sure that you obtain a copy of the Master Builders Solutions Material Safety Data Sheet (MSDS) from our office or our website.

® = registered trademark of MBCC Group member in many countries of the world

MAP#MasterTSeal 912 v2. 12. 2020

STATEMENT OF RESPONSIBILITY

The technical information and application advice given in this Master Builders Solutions publication are based on the present state of our best scientific and practical knowledge. As the information herein is of a general nature, no assumption can be made as to a product's suitability for a particular use or application and no warranty as to its accuracy, reliability, or completeness either expressed or implied is given other than those required by law. The user is responsible for checking the suitability of products for their intended use.

NOTE

Field service where provided does not constitute supervisory responsibility. Suggestions made by Master Builders Solutions either orally or in writing may be followed, modified, or rejected by the owner, engineer or contractor since they, and not Master Builders Solutions, are responsible for carrying out procedures appropriate to a specific application.

Master Builders Solutions Malaysia Sdn Bhd

No. 8, Jalan Keluli 2, Kawasan Perindustrian Bukit Raja,
 41050 Klang, Selangor, Malaysia.
 Tel : +603 3082 1000